

MOVING HOMES



SALES & LETTINGS



Offers Over £130,000

The Wills Building, Newcastle

Offers Over £130,000

Moving Homes are delighted to welcome to the sales market, this stylish "Art Deco" modern ground floor front facing apartment within the iconic Grade II listed Wills Building. Built in the mid 1950's the building was later redeveloped into luxury apartments and reopened in 1999.

Centrally located, with excellent transport links to Newcastle City Centre and the North East Coastline. This property would suit a variety of buyers and must be viewed in order to appreciate what it has to offer. This property offers spacious living accommodation, split over two floors with a mezzanine level, ideal for a home office or second bedroom area, large window to the front allowing the light to flood in two bathrooms, one on each floor and a well equipped kitchen.

This property is to be sold with no upper chain.

Externally there are lawned gardens to the front, allocated parking as well as ample visitors parking.

To secure a viewing please contact Moving Homes on 0191-2964600 or visit our website movinghomesuk.com

EPC Rating C <https://find-energy-certificate.service.gov.uk/energy-certificate/3032-2621-2200-0953-0222>

Tenure - The agent understands the property to be leasehold with 975 years remaining with management cost of £155 pcm. However, this should be confirmed with a licensed legal representative.

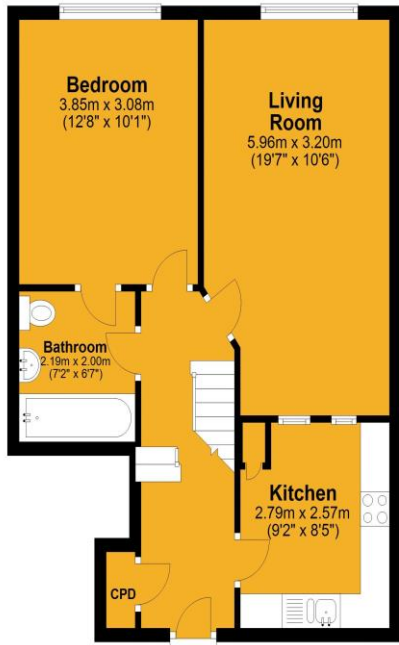
Council Tax Band - C

Covid 19 Viewing Guidelines For the safety of our clients, yourselves and our staff we are currently only allowing viewings to go ahead if viewers wear appropriate PPE (masks and gloves).



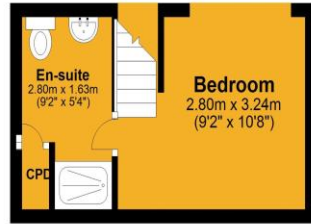
Ground Floor

Approx. 50.9 sq. metres (548.0 sq. feet)



Mezzanine

Approx. 13.4 sq. metres (144.3 sq. feet)



Total area: approx. 64.3 sq. metres (692.3 sq. feet)



Score	Energy rating	Current	Potential
92+	A		
81-91	B		
69-80	C	72 c	73 c
55-68	D		
39-54	E		
21-38	F		
1-20	G		

